

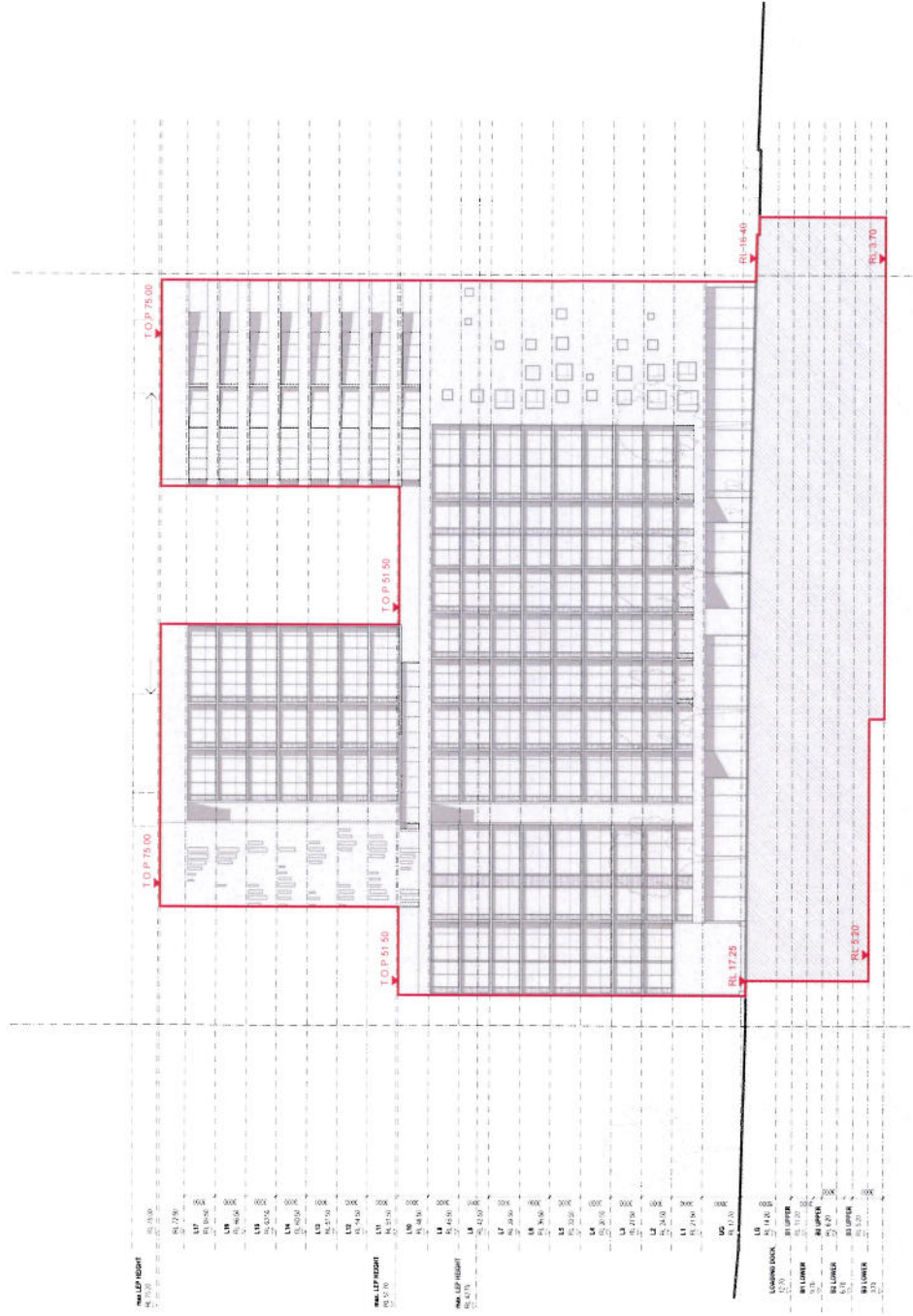
ATTACHMENT A

# **ATTACHMENT A**

**SELECTED DRAWINGS**

**301-303 BOTANY ROAD, ZETLAND**

# ATTACHMENT A



TOP  
TOP OF PARAMET  
(100 MM BELOW MAX LEF HEIGHT)

## STAGE 1 DEVELOPMENT APPLICATION

### MIXED USE DEVELOPMENT

PROJECT NUMBER: 09 019

PROJECT ADDRESS  
301-303 BOTANY ROAD @  
GREEN SQUARE, SYDNEY NSW

FOR  
JOHN NEWELL



STANISIC ASSOCIATES  
LEVEL 3, 146 KENT STREET, SYDNEY, 2000  
T 9589 7871 / F 9589 7822 www.stanisic.com.au

## ENVELOPE - NORTH EAST (DUNNING AVE) ELEVATION

PLANT/1 DELETED

SCALE 1:250 @ A1

54

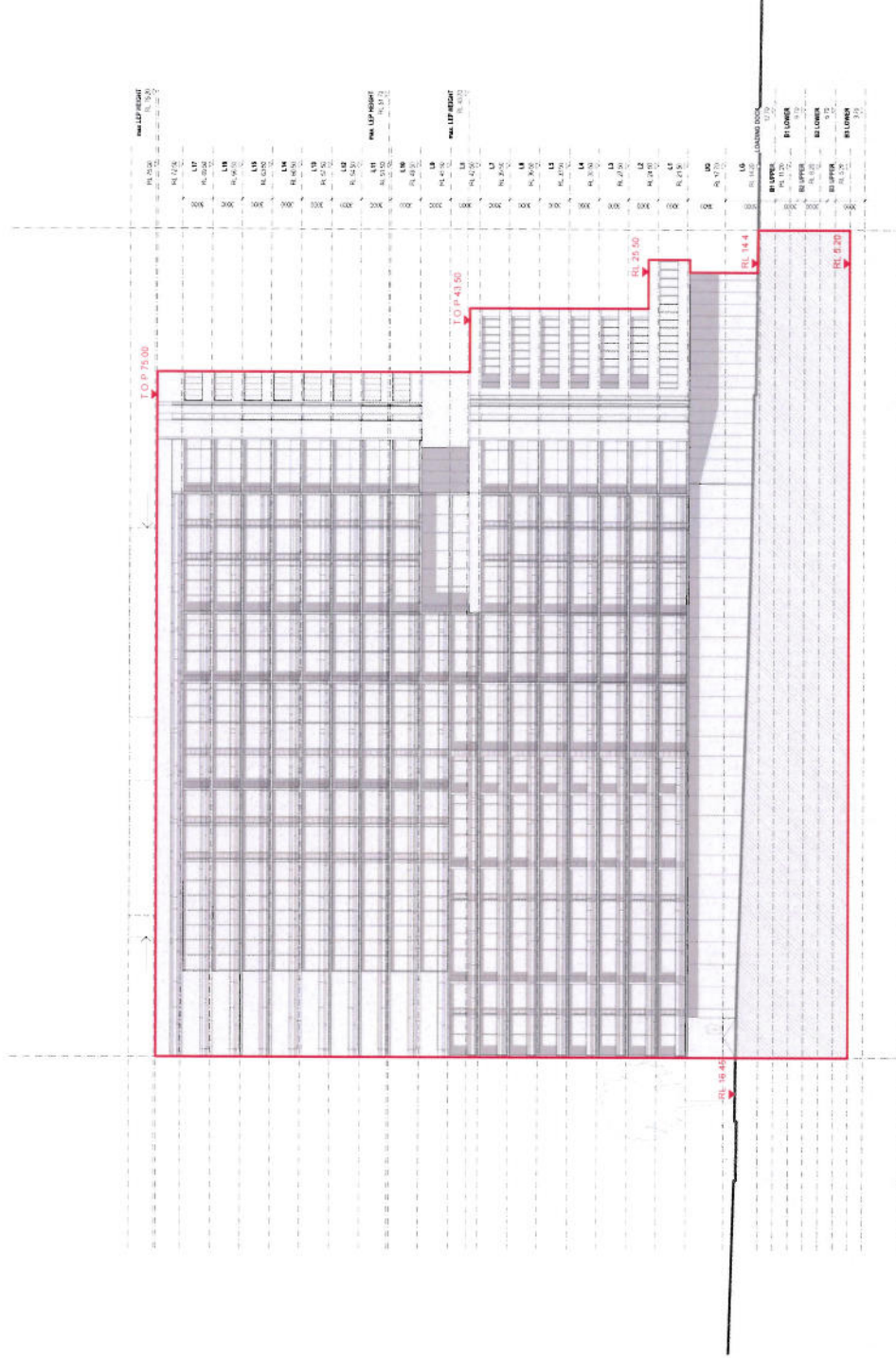
294

DA27

DWG ID

17.02.12

# ATTACHMENT A



T.O.P. TOP OF PARAMET (200 mm BELOW MAX LFP HEIGHT)

**STAGE 1 DEVELOPMENT APPLICATION**  
**MIXED USE DEVELOPMENT**  
 PROJECT NUMBER: **09 019**

PROJECT ADDRESS  
 301-303 BOTANY ROAD @  
 GREEN SQUARE, SYDNEY NSW

FOR  
**JOHN NEWELL**



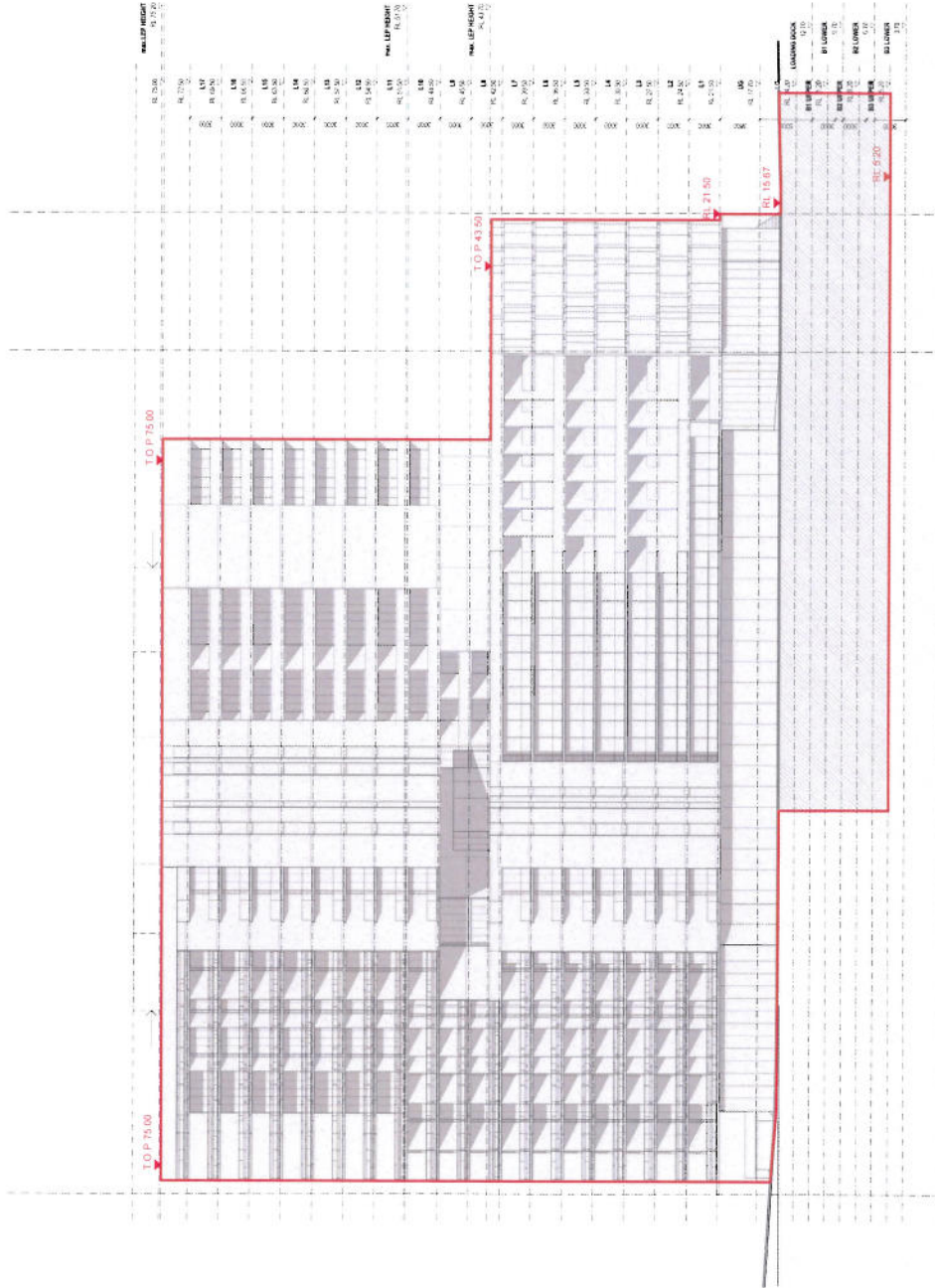
**STANISIC ASSOCIATES**  
 LEVEL 3/136 KENT STREET, SYDNEY 2000  
 1 5059 7871 | 1 5059 7872 | [www.stanasic.com.au](http://www.stanasic.com.au)

PLANT RELOCATED

**ENVELOPE - NORTH WEST (BOURKE ST) ELEVATION**

SCALE 1:250 @ A1  
 DWG NO. **DA28**  
 DWG I.D. **25A**  
 DATE **17.02.12**

# ATTACHMENT A



TOP  
TOP OF RAAGFT  
1200mm BELOW MAX LFP HEIGHT

## STAGE 1 DEVELOPMENT APPLICATION

### MIXED USE DEVELOPMENT

PROJECT NUMBER: 09 019

PROJECT ADDRESS  
301-303 BOTANY ROAD @  
GREEN SQUARE, SYDNEY NSW

FOR  
JOHN NEWELL



STANISIC ASSOCIATES  
LEVEL 3/346 KENT STREET SYDNEY 2000  
1 9399 7871 / 1 9399 7872 www.stanasic.com.au

PLAN (R) (DELETED)

## ENVELOPE - WEST (BOTANY RD) ELEVATION

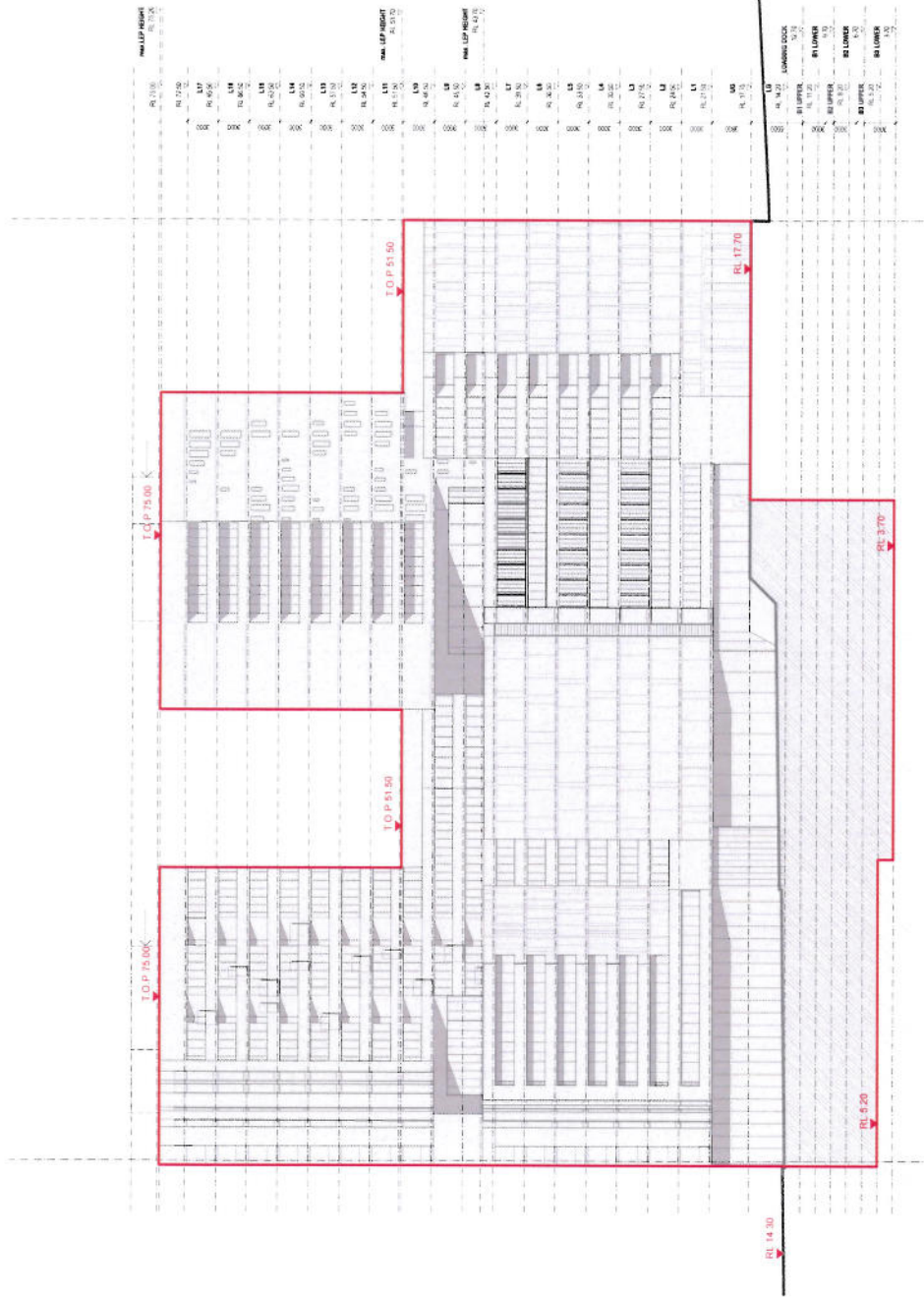
SCALE 1:250 @ A1

DA29

DWG ID: 17.02.12



# ATTACHMENT A



TOP  
TOP OF FRAME  
(200mm BELOW MAX LFP HEIGHT)

**STAGE 1 DEVELOPMENT APPLICATION**

**MIXED USE DEVELOPMENT**

PROJECT NUMBER: **09 019**

PROJECT ADDRESS  
301-303 BOTANY ROAD @  
GREEN SQUARE, SYDNEY NSW

FOR  
**JOHN NEWELL**



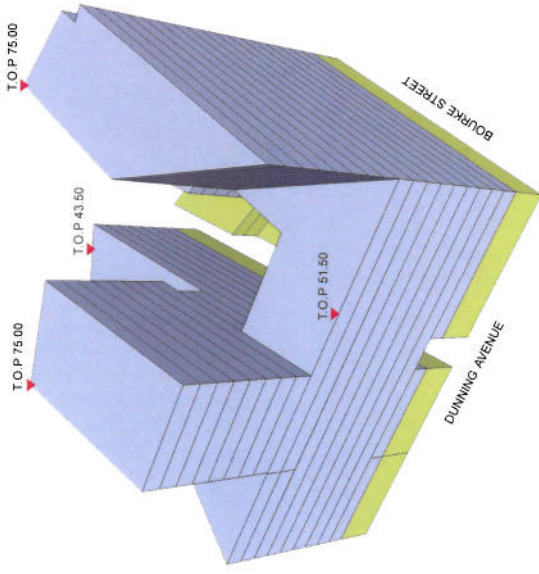
STANISIC ASSOCIATES  
LEVEL 3, 1046 KENT STREET, SYDNEY, 2000  
T 5299 7871 / F 5299 7872 www.stanisic.com.au

ENVELOPE - SOUTH WEST (CIVIC PLAZA) ELEVATION

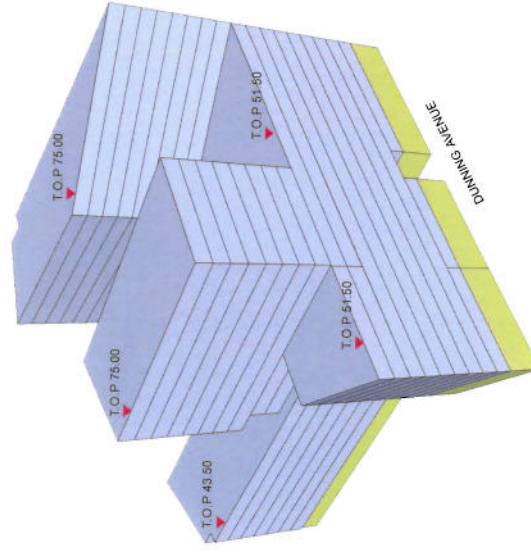
SCALE: 1:250 @ A1  
DWG ID: DA30  
17.02.12



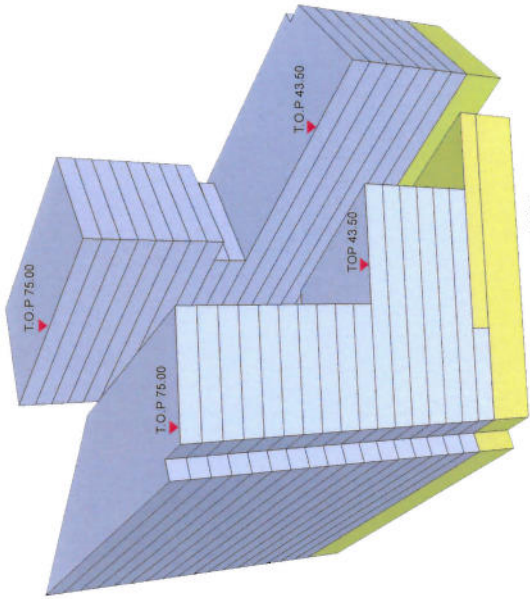
# ATTACHMENT A



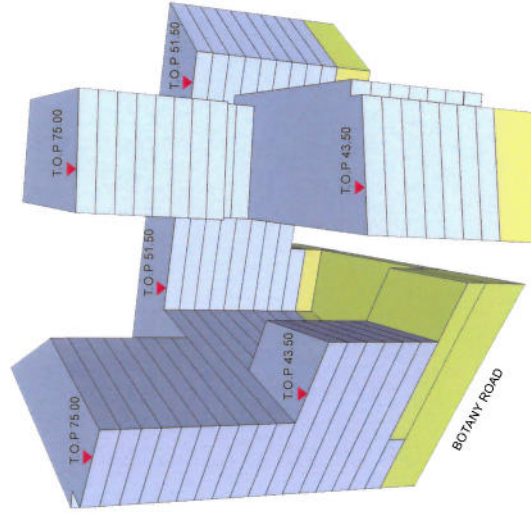
3D ENVELOPE 3



3D ENVELOPE 4



3D ENVELOPE 2



3D ENVELOPE 1

RESIDENTIAL  
SCALE  
T.O.P TOP OF PARAPET  
(20mm BELOW MAX HEIGHT)

## STAGE 1 DEVELOPMENT APPLICATION

### MIXED USE DEVELOPMENT

PROJECT NUMBER: 09 019

PROJECT ADDRESS  
301,303 BOTANY ROAD @  
GREEN SQUARE SYDNEY NSW

FOR  
JOHN NEWELL



STANISTIC ASSOCIATES  
LEVEL 3 / PARMENT STREET SYDNEY 2000  
1 569 7611 / 569 7872 www.stanistic.com.au

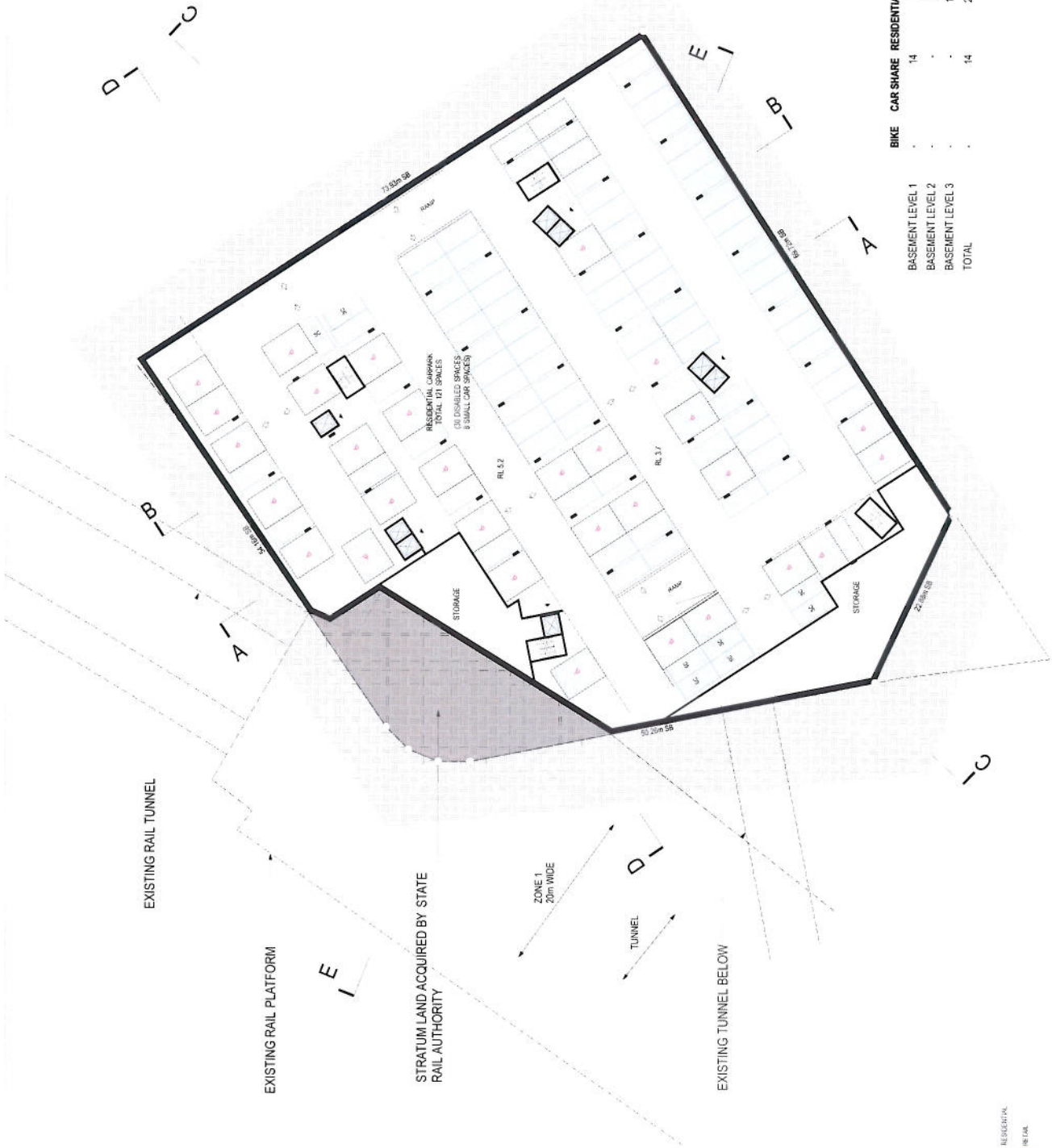
5/4

25/4  
DA32  
NTS  
DWG I.D. 17.02.12

## 3D ENVELOPES 1-4



# ATTACHMENT A



REQUIRED	ADAPTABLE SPACES	CAR SPACES
RESIDENTIAL	54	211
VISITOR	1	57 (COMBINED W/RETAIL)
RETAIL	1	100
<b>TOTAL REQUIRED SPACES</b>		<b>311</b>

BIKE	CAR SHARE	RESIDENTIAL	RETAIL/VISITOR	ADAPT. SPACES	CAR SPACES
BASEMENT LEVEL 1	14	0	94	2	94
BASEMENT LEVEL 2	-	90	6	24	96
BASEMENT LEVEL 3	-	121	0	30	121
<b>TOTAL</b>	<b>14</b>	<b>211</b>	<b>100</b>	<b>56</b>	<b>311</b>

SOUTH SYDNEY COUNCIL DCP 11, Clause 3.2.1. Concession to reduce parking by 25% may be possible as site is within 400m to rail station and bus routes.



# ATTACHMENT A



RESIDENTIAL  
RETAIL

**STAGE 1 DEVELOPMENT APPLICATION**  
**MIXED USE DEVELOPMENT**  
 PROJECT NUMBER: **09 019**

PROJECT ADDRESS  
 301-303 BOTANY ROAD @  
 GREEN SQUARE, SYDNEY NSW

FOR  
 JOHN NEWELL



STANISIC ASSOCIATES  
 LEVEL 3, 134-141 FENT STREET, SYDNEY, 2000  
 T: 9559 1817 | F: 9559 7872 | www.stanisic.com.au

I

34  
 25M  
 SCALE 1:200 @ A1  
 DWG ID: DA04 K  
 02/09/11

**BASEMENT 2**

# ATTACHMENT A



**BASEMENT 1**

DA05 K  
 DWG I.D. 02.09.11

2504  
 SCALE 1:250 @ A1

SAI

I

**STANISIC ASSOCIATES**  
 LEVEL 3/146 WEST STREET SYDNEY 2000  
 T 9209 7871 | F 9209 7872 www.stanisic.com.au



FOR **JOHN NEWELL**

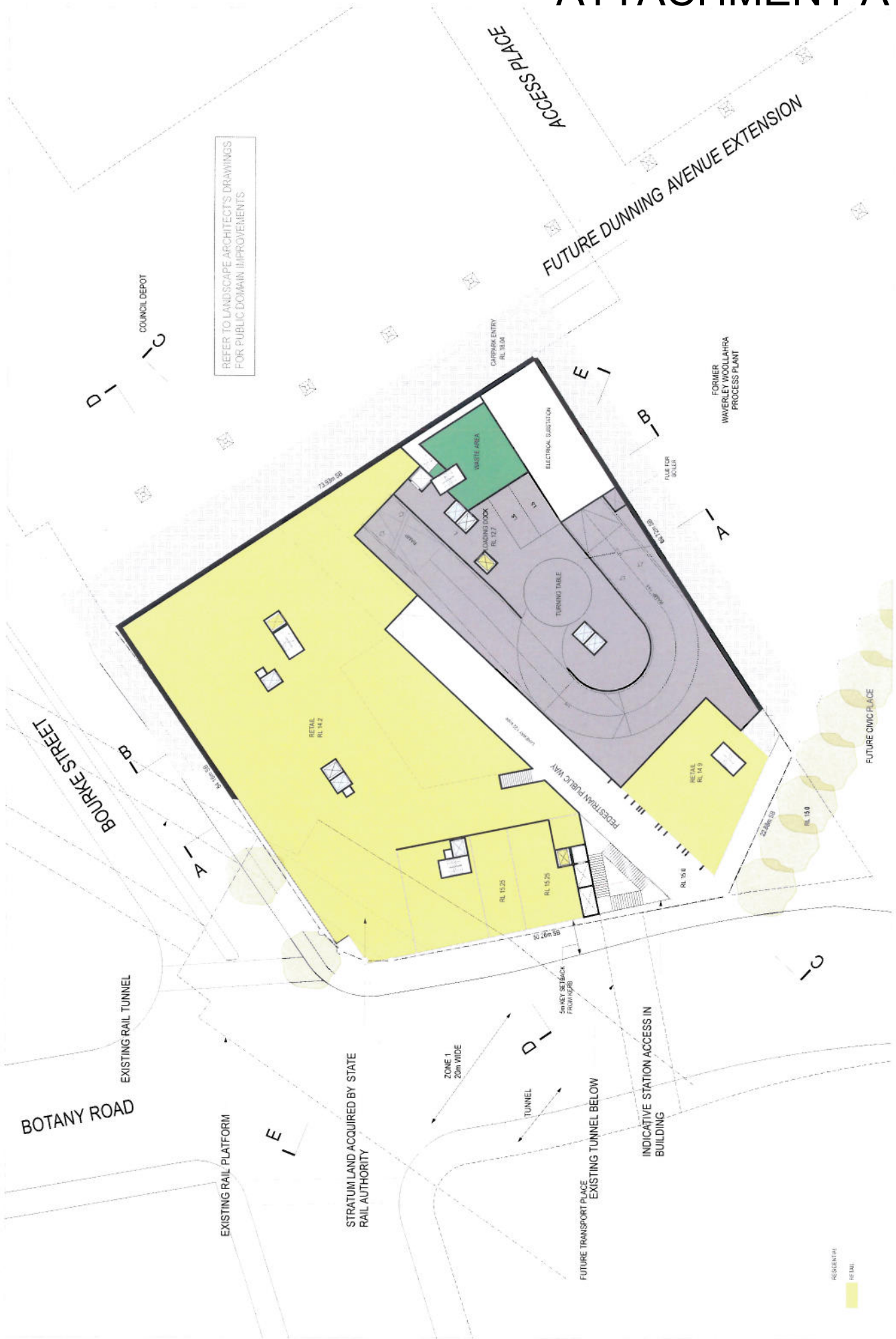
PROJECT ADDRESS  
 301-303 BOTANY ROAD @  
 GREEN SQUARE, SYDNEY NSW

**STAGE 1 DEVELOPMENT APPLICATION**

**MIXED USE DEVELOPMENT**

PROJECT NUMBER: **09 019**

# ATTACHMENT A



REFER TO LANDSCAPE ARCHITECT'S DRAWINGS FOR PUBLIC DOMAIN IMPROVEMENTS

RESIDENTIAL  
RETAIL

## STAGE 1 DEVELOPMENT APPLICATION

### MIXED USE DEVELOPMENT

PROJECT NUMBER: 09 019

PROJECT ADDRESS  
301-303 BOTANY ROAD @  
GREEN SQUARE SYDNEY NSW

FOR  
JOHN NEWELL



STANASIC ASSOCIATES  
LEVEL 3, 105/106 STREET SYDNEY 2000  
1 9359 7871 / 1 9359 7872 www.stanasic.com.au

5M

SCALE 1:250 @ A1  
25A

DA06 K  
DWG I.D. 02 08 11

## LOWER GROUND









# ATTACHMENT A



LEVELS 2,4,6  
DA09 K  
DWG I.D. 02.09.11

SCALE 1:250 @ A1

5M

STANISIC ASSOCIATES  
LEVEL 3, 146 KENT STREET, SYDNEY 2000  
1 9009 7877 / 9589 7877 [www.stanisic.com.au](http://www.stanisic.com.au)



FOR JOHN NEWELL

PROJECT ADDRESS  
301-303 BOTANY ROAD @  
GREEN SQUARE, SYDNEY NSW

## STAGE 1 DEVELOPMENT APPLICATION

### MIXED USE DEVELOPMENT

PROJECT NUMBER: 09 019

RESIDENTIAL  
RETAIL



# ATTACHMENT A



## STAGE 1 DEVELOPMENT APPLICATION

### MIXED USE DEVELOPMENT

PROJECT NUMBER: 09 019

PROJECT ADDRESS  
301-303 BOTANY ROAD @  
GREEN SQUARE, SYDNEY NSW

FOR  
JOHN NEWELL



STANISTIC ASSOCIATES  
LEVEL 3/246 KENT STREET, SYDNEY 2000  
1 9559 7871 | 1 9559 7872 | www.stanistic.com.au

SCALE: 1:250 @A1

DA10 K  
DWG ID: 02.09.11

## LEVELS 3,5,7

# ATTACHMENT A



RESIDENTIAL  
RETAIL

## STAGE 1 DEVELOPMENT APPLICATION

### MIXED USE DEVELOPMENT

PROJECT NUMBER: 09 019

PROJECT ADDRESS  
301-303 BOTANY ROAD @  
GREEN SQUARE, SYDNEY NSW

FOR  
JOHN NEWELL



STANISIC ASSOCIATES  
LEVEL 3/146 HUNT STREET SYDNEY 2000  
1 9559 7871 | 1 9559 7822 www.stanisic.com.au

SCALE 1:250 @ A1

DA 11 K  
DWG I.D. 02.09.11

## LEVELS 8-9



# ATTACHMENT A



**LEVEL 10**

**DA12 K**

25M

5M

**STANISIC ASSOCIATES**  
 LEVEL 3, 105 MERRITT STREET, SYDNEY 2000  
 T: 0025 7971 / F: 0025 7872 [www.stanisic.com.au](http://www.stanisic.com.au)

**FOR JOHN NEWELL**

**PROJECT ADDRESS**  
 301-303 BOTANY ROAD @  
 GREEN SQUARE, SYDNEY NSW

**SCALE 1:250 @ A1**

DWG. I.D. 02.09.11

**STAGE 1 DEVELOPMENT APPLICATION**

**MIXED USE DEVELOPMENT**

**PROJECT NUMBER: 09 019**





# ATTACHMENT A



LEVELS 11-17

DA 13 K  
DWG I.D. 02/09/11

SCALE 1:250 @ A1

5M

1

STANISIC ASSOCIATES  
LEVEL 3/146 KENT STREET, SYDNEY 2000  
1 9599 7877 / 9599 7872 www.stanisic.com.au



FOR JOHN NEWELL

PROJECT ADDRESS  
301-303 BOTANY ROAD @  
GREEN SQUARE, SYDNEY NSW

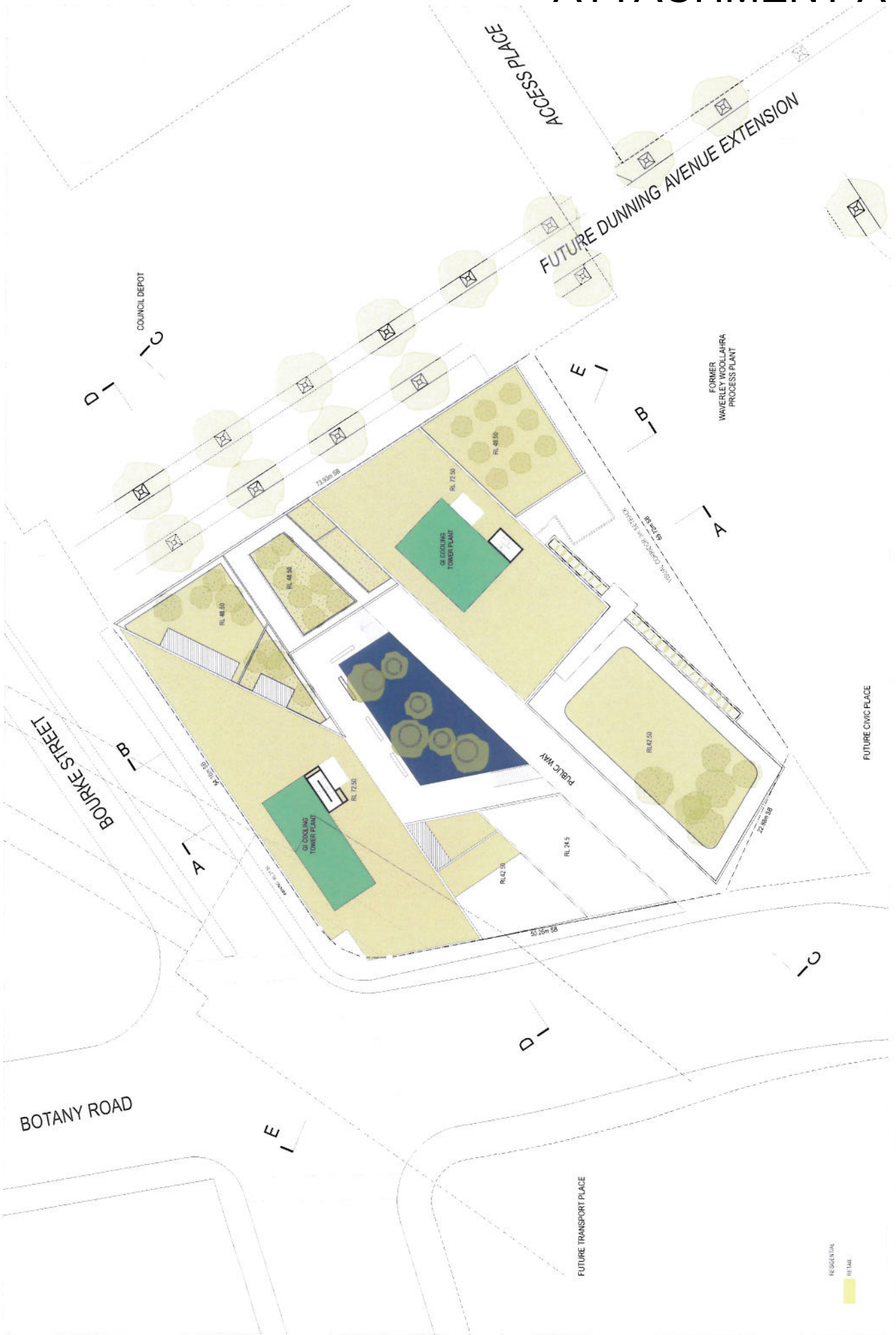
STAGE 1 DEVELOPMENT APPLICATION

MIXED USE DEVELOPMENT

PROJECT NUMBER: 09 019

RESIDENTIAL  
RETAIL

# ATTACHMENT A



ROOF

**STAGE 1 DEVELOPMENT APPLICATION**  
**MIXED USE DEVELOPMENT**  
 PROJECT NUMBER: 09 019

PROJECT ADDRESS  
 301-303 BOTANY ROAD @  
 GREEN SQUARE, SYDNEY NSW

FOR  
**JOHN NEWELL**

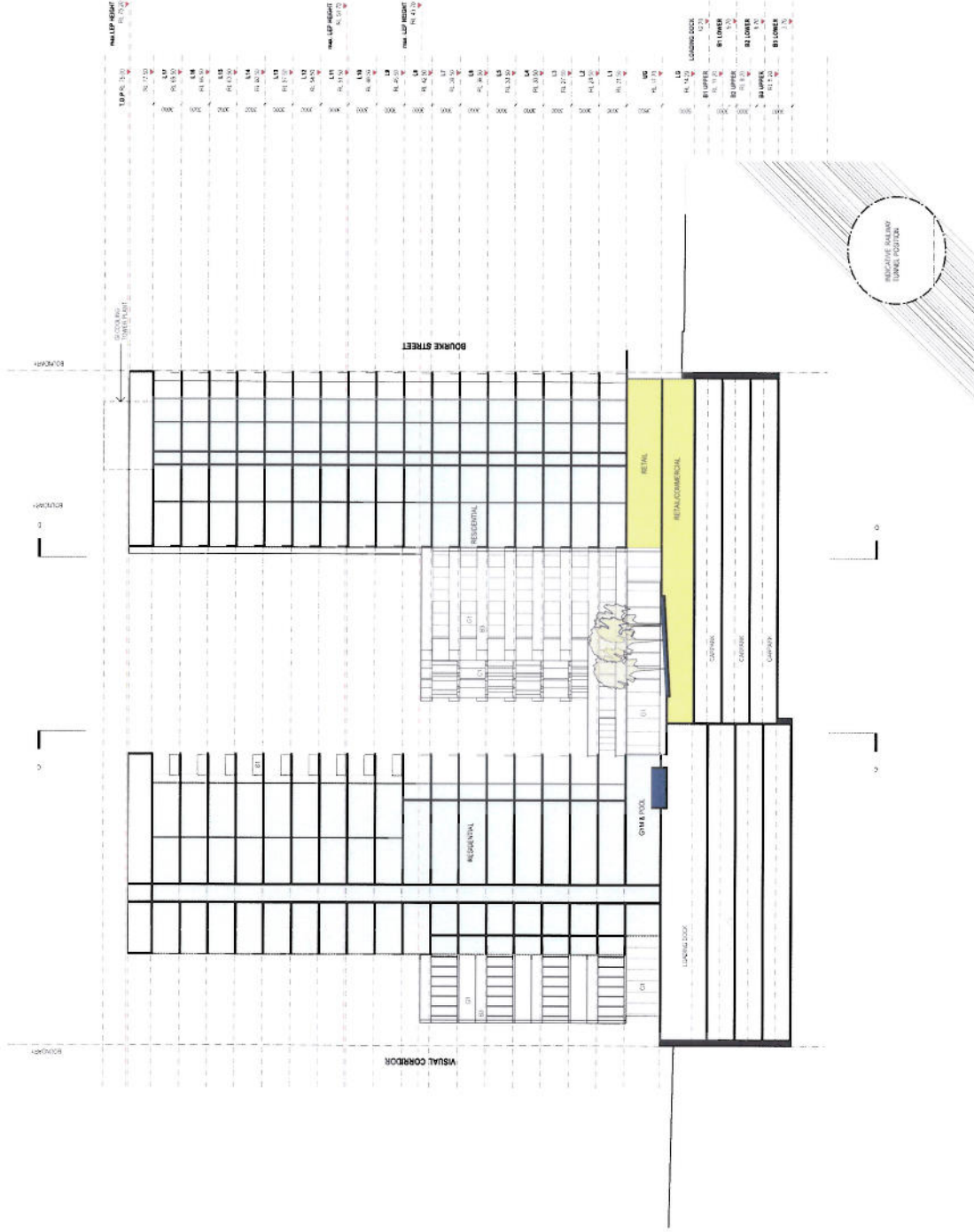
**STANISIC ASSOCIATES**  
 LEVEL 3/246 HUNT STREET, SYDNEY 2000  
 I 9559 7871 | F 9559 7872 | www.stanisic.com.au

5M  
 SCALE 1:250 @ A1  
 DWG I.D. 02/09/11

**DA14 K**  
 25A



# ATTACHMENT A



## EXTERNAL MATERIALS AND FINISHES LEGEND

### Baseframe

- B1 Baseframe, aluminium framed glass panels, powdercoat
- B2 Baseframe, glass panel
- B3 Baseframe, precast concrete panel, joint

### Cladding

- C1 Cladding, precast concrete panel, joint
- C2 Cladding, in-situ concrete, joint

### Glazing

- G1 Glazing, aluminium framed glass windows and doors, powdercoat
- G2 Glazing, aluminium framed glass louvers, powdercoat
- G3 Glazing, aluminium framed glass slatwall, powdercoat
- G4 Glazing, frameless glass floor and glass panel
- G5 Glazing, frameless slatwall glass panel
- G6 Glazing, frameless fixed glass panel

### Miscellaneous

- M1 Perforated steel roller shutter, carbonband

### Screens

- S1 Screens, sliding aluminium perforated panel, powdercoat
- S2 Screens, fixed aluminium bar grill, powdercoat

## STAGE 1 DEVELOPMENT APPLICATION

### MIXED USE DEVELOPMENT

PROJECT NUMBER: 09 019

PROJECT ADDRESS  
301-303 BOTANY ROAD @  
GREEN SQUARE, SYDNEY NSW

FOR  
JOHN NEWELL



STANISIC ASSOCIATES  
LEVEL 31/346 KENT STREET SYDNEY 2000  
T 3629 1811 F 3629 1812 www.stanisic.com.au

PLANT R1 DREF110

25M

5M

SCALE 1:250 @ A1

## SECTION A-A

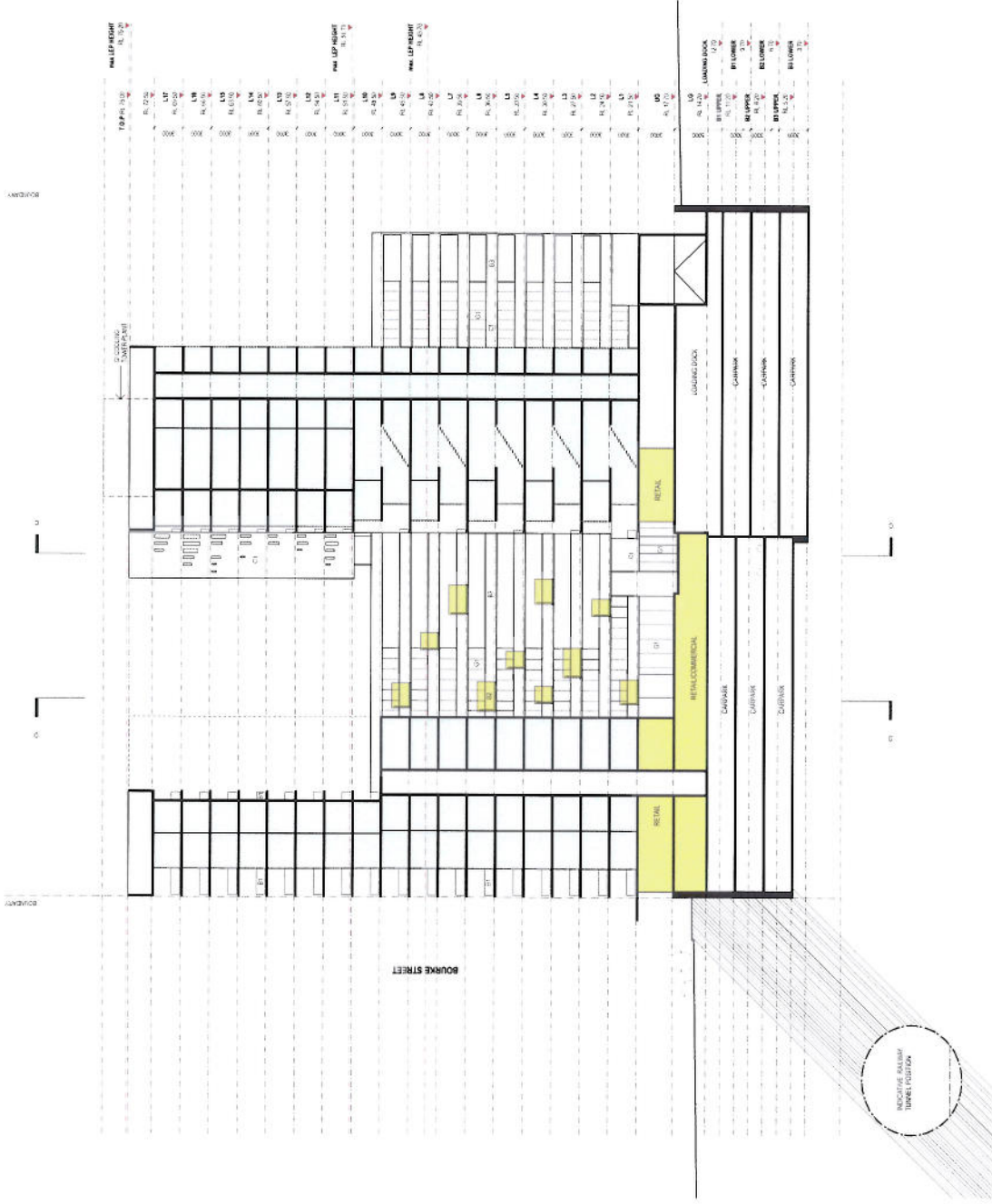
DA15

K

DWG ID 17.02.12



# ATTACHMENT A



## EXTERNAL MATERIALS AND FINISHES LEGEND

- |                      |    |  |
|----------------------|----|--|
| <b>Materials</b>     | B1 | Ballastbed, aluminum framed glass panel, powdercoat          |
|                      | B2 | Ballastbed, glass panel                                      |
|                      | B3 | Ballastbed, precast concrete panel, paint                    |
| <b>Clauding</b>      | C1 | Cladding, precast concrete panel, paint                      |
|                      | C2 | Cladding, in situ concrete, paint                            |
| <b>Glazing</b>       | G1 | Glazing, aluminum framed glass windows and doors, powdercoat |
|                      | G2 | Glazing, aluminum framed glass screens, powdercoat           |
|                      | G3 | Glazing, aluminum framed glass spandrel, powdercoat          |
|                      | G4 | Glazing, frameless glass doors and panel                     |
|                      | G5 | Glazing, frameless shopfront glass panel                     |
|                      | G6 | Glazing, frameless fixed glass panel                         |
| <b>Miscellaneous</b> | M1 | Perforated steel roller shutter, colorona                    |
| <b>Screens</b>       | S1 | Screen, sliding aluminum perforated panel, powdercoat        |
|                      | S2 | Screen, fixed aluminum bar grill, powdercoat                 |

SECTION B-B

DA 16 K  
25M  
SCALE 1:250 @ A1  
DWG ID: 17.02.12

PLANT R. REFERED

STANIS ASSOCIATES  
LEVEL 2, 346 KENT STREET, SYDNEY 2000  
1 9255 7817 | 1 9255 7817  
www.stanis.com.au



FOR JOHN NEWELL

PROJECT ADDRESS  
301-303 BOTANY ROAD @  
GREEN SQUARE, SYDNEY NSW

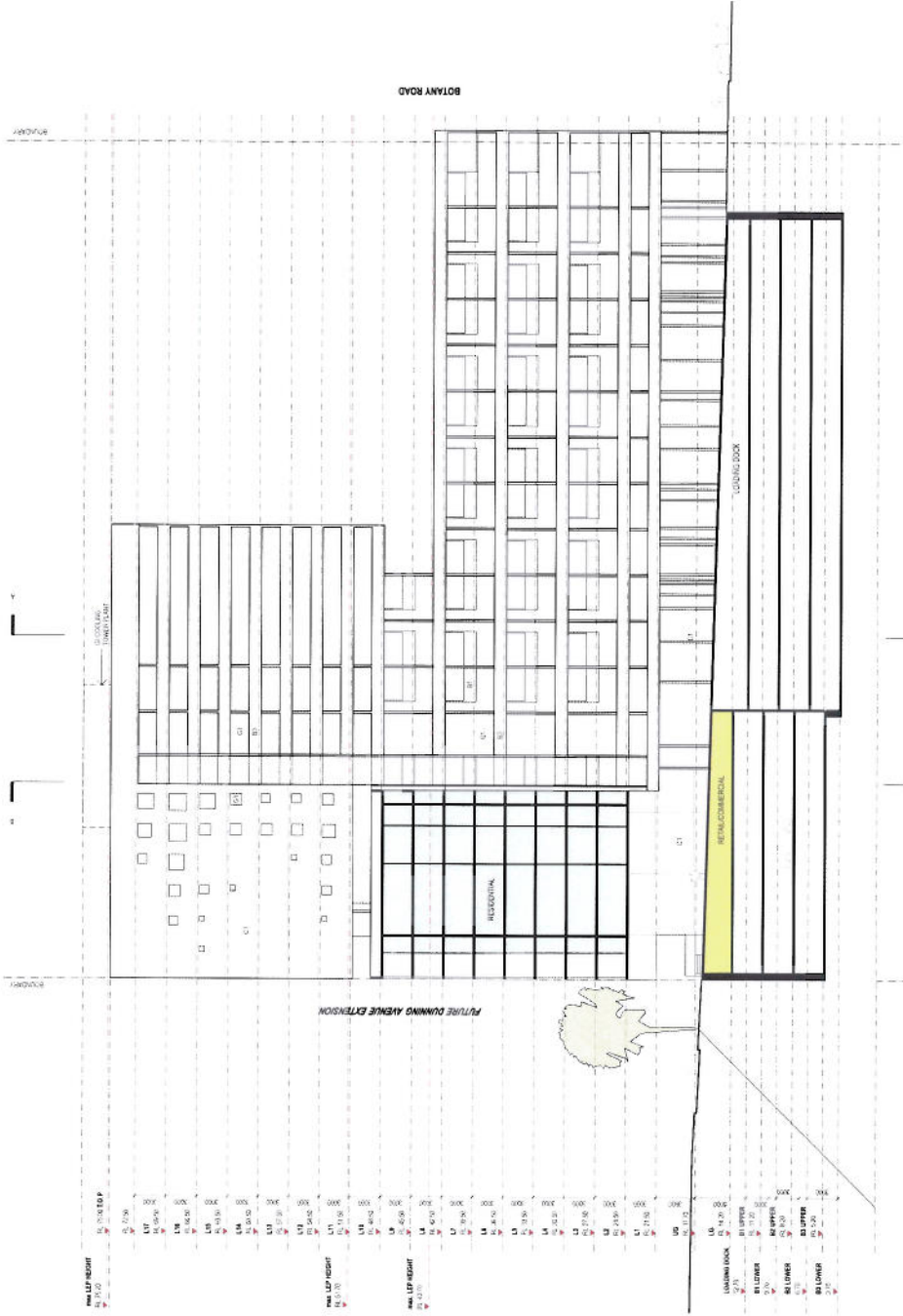
STAGE 1 DEVELOPMENT APPLICATION

MIXED USE DEVELOPMENT

PROJECT NUMBER: 09 019

RESIDENTIAL  
RETAIL

# ATTACHMENT A



## EXTERNAL MATERIALS AND FINISHES LEGEND

- Balustrade**
  - B1 Balustrade, aluminium framed glass panel, powdercoat
  - B2 Balustrade, glass panel
  - B3 Balustrade, precast concrete panel, paint
- Cladding**
  - C1 Cladding, precast concrete panel, paint
  - C2 Cladding, in situ concrete, paint
- Glazing**
  - G1 Glazing, aluminium framed glass windows and doors, powdercoat
  - G2 Glazing, aluminium framed glass louvers, powdercoat
  - G3 Glazing, aluminium framed glass spandrel, powdercoat
  - G4 Glazing, frameless glass doors and panel
  - G5 Glazing, frameless aluminium glass panel
  - G6 Glazing, frameless fixed glass panel
- Miscellaneous**
  - M1 Polished steel roller shutter, cobbleford
- Screens**
  - S1 Screen, sliding aluminium perforated panel, powdercoat
  - S2 Screen, fixed aluminium bar grt, powdercoat

## STAGE 1 DEVELOPMENT APPLICATION

**MIXED USE DEVELOPMENT**  
PROJECT NUMBER: 09 019

PROJECT ADDRESS  
301-303 BOTANY ROAD @  
GREEN SQUARE, SYDNEY NSW

FOR  
JOHN NEWELL



STANISIC ASSOCIATES  
LEVEL 3, 346 KENT STREET SYDNEY 2000  
1 9399 2617 / 1 9299 7872 www.stanisic.com.au

PLANT/LEGEND

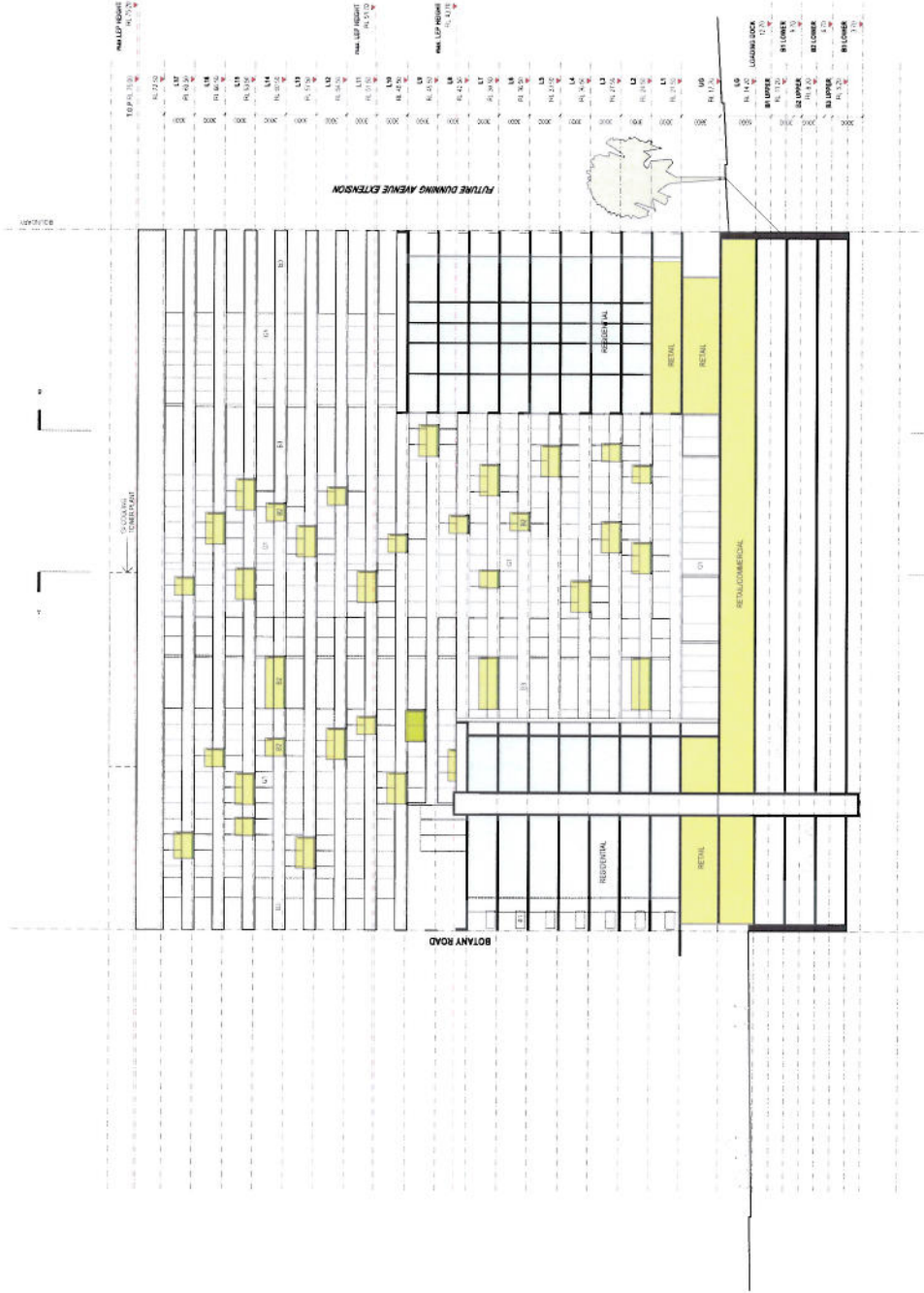


## SECTION C-C

DA17  
DWG I.D.  
SCALE 1:250 @ A1  
17.02.12

RESIDENTIAL  
RETAIL

# ATTACHMENT A



### EXTERNAL MATERIALS AND FINISHES LEGEND

- Belestrade**
  - B1: Granite, aluminium framed glass panel, powdercoat
  - B2: Bevelable glass panel
  - B3: Bevelable precast concrete panel, paint
- Cladding**
  - C1: Cladding - precast concrete panels, paint
  - C2: Cladding - in situ concrete, paint
- Glazing**
  - G1: Glazing - aluminium framed glass windows and doors, powdercoat
  - G2: Glazing - aluminium framed glass louvers, powdercoat
  - G3: Glazing - aluminium framed glass spandrel, powdercoat
  - G4: Glazing - aluminium framed glass doors and panels
  - G5: Glazing - aluminium framed glass panels
  - G6: Glazing - aluminium framed glass panels
- Miscellaneous**
  - M1: Miscellaneous
  - M2: Miscellaneous
  - M3: Miscellaneous
  - M4: Miscellaneous
  - M5: Miscellaneous
  - M6: Miscellaneous
  - M7: Miscellaneous
  - M8: Miscellaneous
  - M9: Miscellaneous
  - M10: Miscellaneous
  - M11: Miscellaneous
  - M12: Miscellaneous
  - M13: Miscellaneous
  - M14: Miscellaneous
  - M15: Miscellaneous
  - M16: Miscellaneous
  - M17: Miscellaneous
  - M18: Miscellaneous
  - M19: Miscellaneous
- Screens**
  - S1: Screen - fixed aluminium bar grt, powdercoat
  - S2: Screen - fixed aluminium bar grt, powdercoat

PROJECT ADDRESS  
 301-303 BOTANY ROAD @  
 GREEN SQUARE, SYDNEY NSW

FOR  
 JOHN NEWELL



STANIS ASSOCIATES  
 LEVEL 37, 368 KENT STREET, SYDNEY 2000  
 T 9229 1811 F 9229 1817 www.stanis.com.au

PLANT RELEVANT

5M

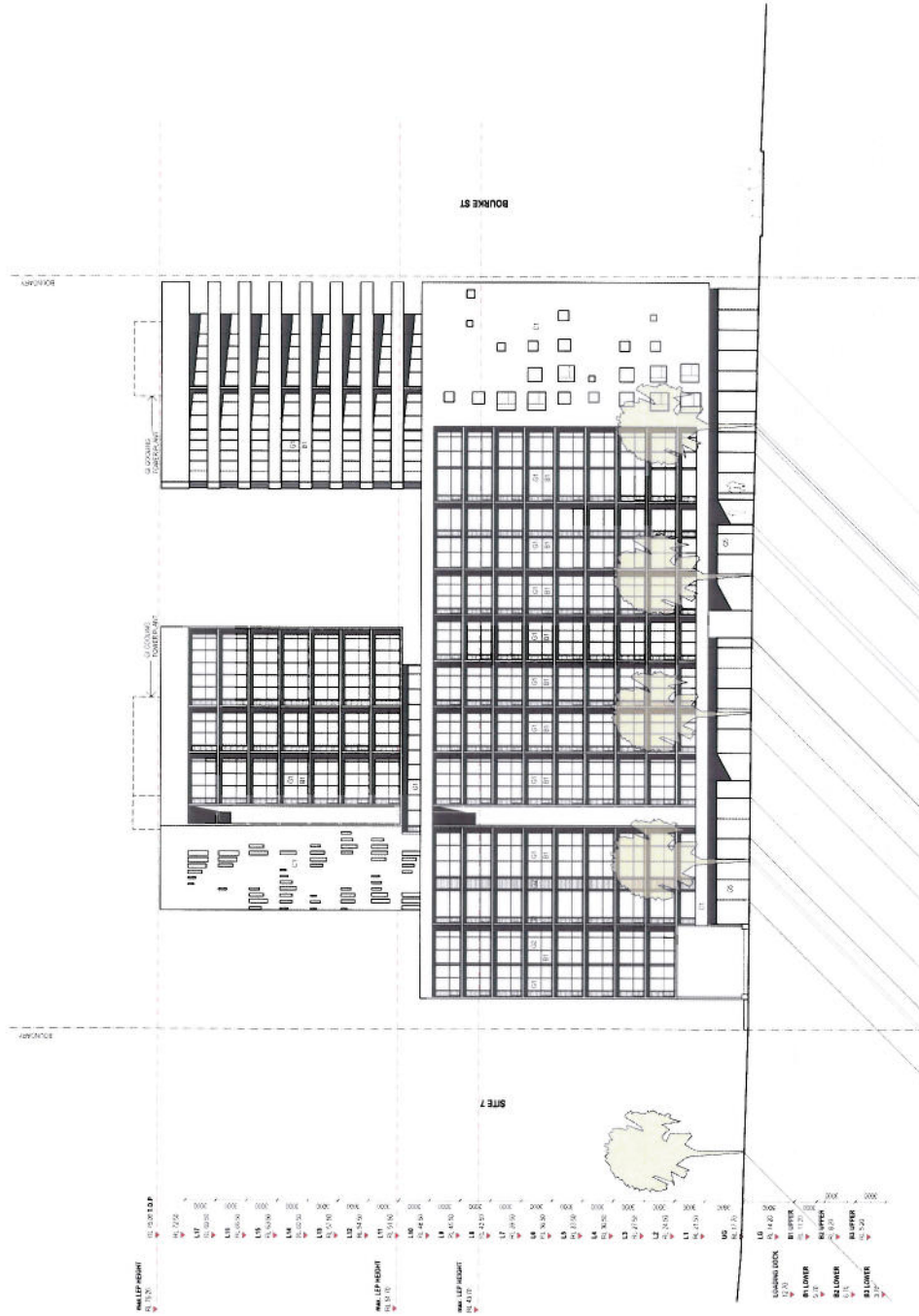
25M

SCALE 1:250 @ A1  
 DWG ID: DA18  
 SECTION D-D  
 K  
 17.02.12





# ATTACHMENT A



## EXTERNAL MATERIALS AND FINISHES LEGEND

- Balustrade**
  - B1 Balustrade, aluminum framed glass panel, powdercoat
  - B2 Balustrade, glass panel
  - B3 Balustrade, precast concrete panel, paint
- Cladding**
  - C1 Cladding, precast concrete panel, paint
  - C2 Cladding, in-situ concrete, paint
- Glazing**
  - G1 Glazing, aluminum framed glass windows and doors, powdercoat
  - G2 Glazing, aluminum framed glass louvers, powdercoat
  - G3 Glazing, aluminum framed glass spigots, powdercoat
  - G4 Glazing, aluminum framed glass doors and panels
  - G5 Glazing, frameless shogroni glass panel
  - G6 Glazing, frameless fixed glass panel
- Miscellaneous**
  - M1 Perforated steel roller shutter, cobaltblue
- Screens**
  - S1 Screen, slating aluminum perforated panel, powdercoat
  - S2 Screen, fixed aluminum bar grill, powdercoat

## STAGE 1 DEVELOPMENT APPLICATION

**MIXED USE DEVELOPMENT**  
PROJECT NUMBER: 09 019

PROJECT ADDRESS  
301-303 BOTANY ROAD @  
GREEN SQUARE, SYDNEY NSW

FOR  
JOHN NEWELL



STANIS ASSOCIATES  
LEVEL 7, 346 KENT STREET SYDNEY 2000  
1 9256 7811 / 1 9256 7872 www.stanis.com.au

PLANT R/L (REF ID)

I

5M

25M

DA20

K

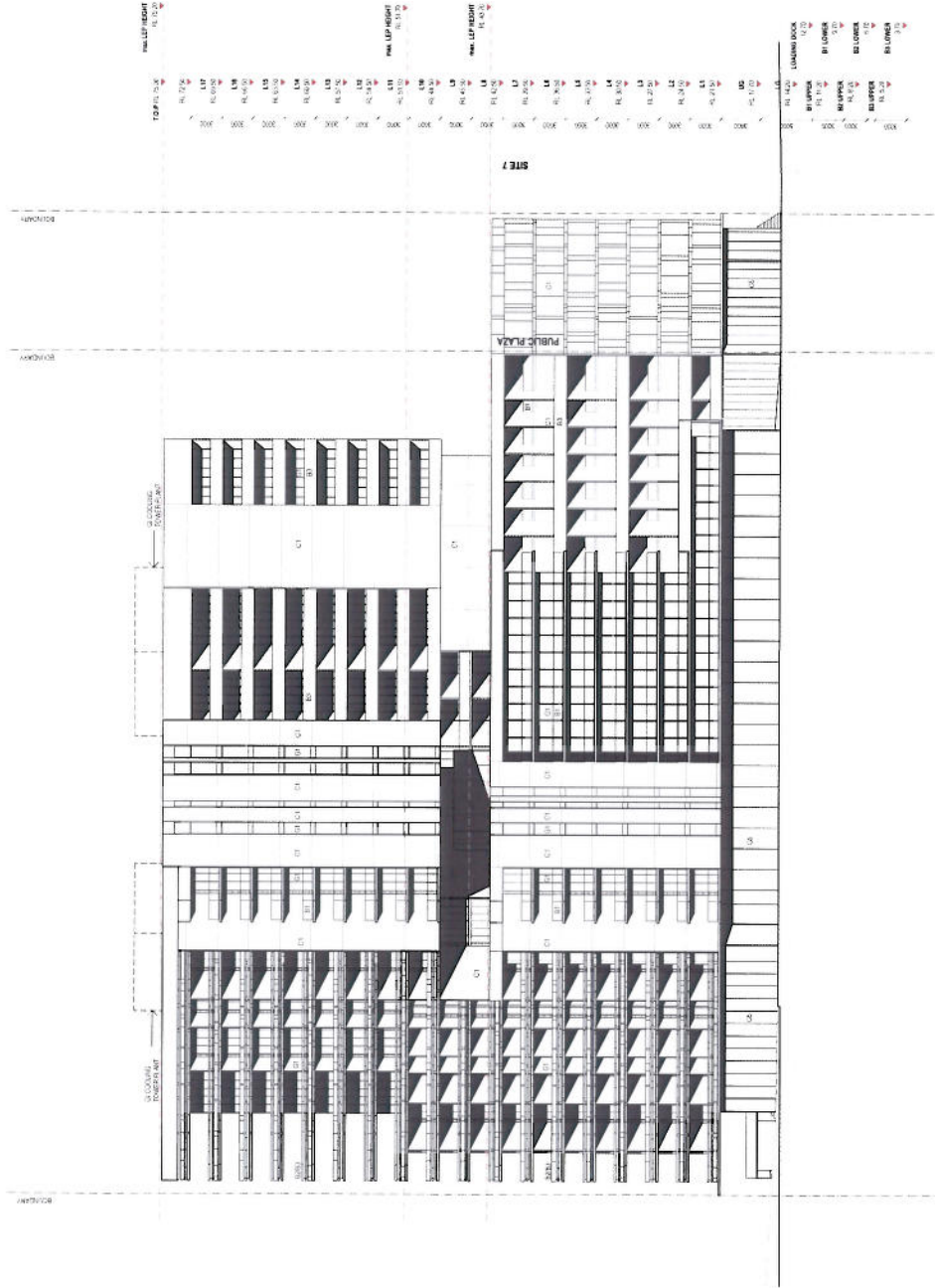
SCALE 1:250 @ A1 DWG 1.D 17.02.12

## NORTH EAST (DUNING AVE) ELEVATION





# ATTACHMENT A



## EXTERNAL MATERIALS AND FINISHES LEGEND

- Balustrade**
  - B1 Balustrade, aluminum framed glass panel, powdercoat
  - B2 Balustrade, glass panel
  - B3 Balustrade, precast concrete panel, paint
- Cladding**
  - C1 Cladding, precast concrete panel, paint
  - C2 Cladding, in-situ concrete, paint
- Glazing**
  - G1 Glazing, aluminum framed glass windows and doors, powdercoat
  - G2 Glazing, aluminum framed glass boxes, powdercoat
  - G3 Glazing, aluminum framed glass spandrel, powdercoat
  - G4 Glazing, frameless glass doors and panel
  - G5 Glazing, frameless shapetone glass panel
  - G6 Glazing, frameless fixed glass panel
- Miscellaneous**
  - M1 Perforated steel (other slat); colorbond
- Screens**
  - S1 Screen, slat; aluminum perforated panel, powdercoat
  - S2 Screen, fixed aluminum bar grill, powdercoat

## STAGE 1 DEVELOPMENT APPLICATION

### MIXED USE DEVELOPMENT

PROJECT NUMBER: 09 019

PROJECT ADDRESS  
301-303 BOTANY ROAD @  
GREEN SQUARE, SYDNEY NSW

FOR  
JOHN NEWELL



STANISTIC ASSOCIATES  
LEVEL 31 MARKET STREET SYDNEY 2000  
1 925 9877 | 925 9877 www.stanistic.com.au

PLANT (LOTTED)



5M

25M

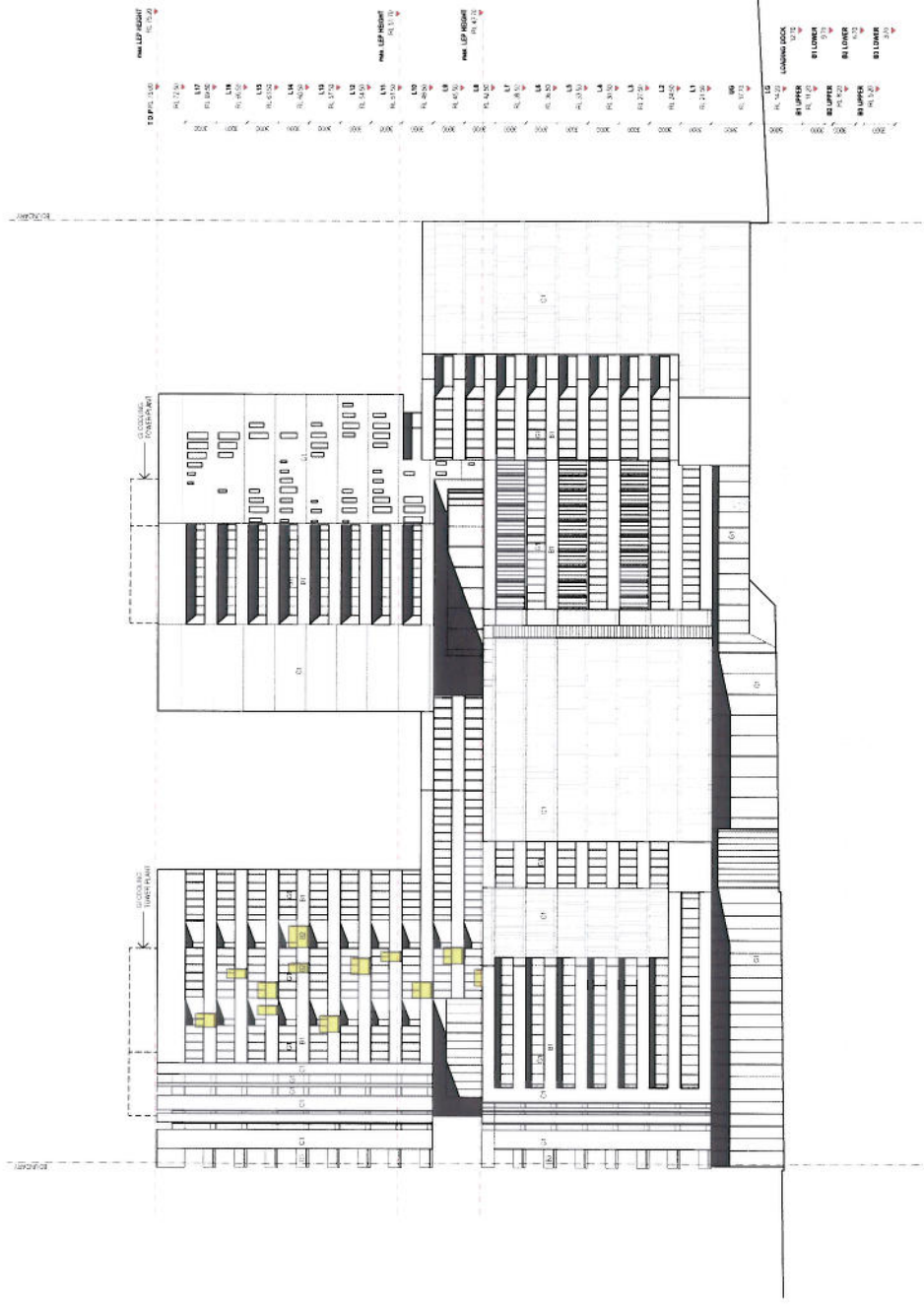
DA22

K

SCALE 1:250 @ A1 DWG ID 17.02.12

## WEST (BOTANY RD) ELEVATION

# ATTACHMENT A



### EXTERNAL MATERIALS AND FINISHES LEGEND

- Balustrade**
  - B1 Balustrade, aluminum framed glass panel, powdercoat
  - B2 Balustrade, glass panel
  - B3 Balustrade, precast concrete panel, paint
- Cladding**
  - C1 Cladding, precast concrete panel, paint
  - C2 Cladding, masonry concrete, paint
- Glazing**
  - G1 Glazing, aluminum framed glass windows and doors, powdercoat
  - G2 Glazing, aluminum framed glass louvers, powdercoat
  - G3 Glazing, aluminum framed glass operable, powdercoat
  - G4 Glazing, frameless glass doors and panels
  - G5 Glazing, frameless structural glass panel
  - G6 Glazing, frameless fixed glass panel
- Miscellaneous**
  - M1 Perforated steel roller shutter, colourbond
- Screens**
  - S1 Screen, sliding aluminum perforated panel, powdercoat
  - S2 Screen, fixed aluminum bar grill, powdercoat

## SOUTH WEST (CIVIC PLAZA) ELEVATION

PLANT ROOM DELETED

FOR JOHN NEWELL



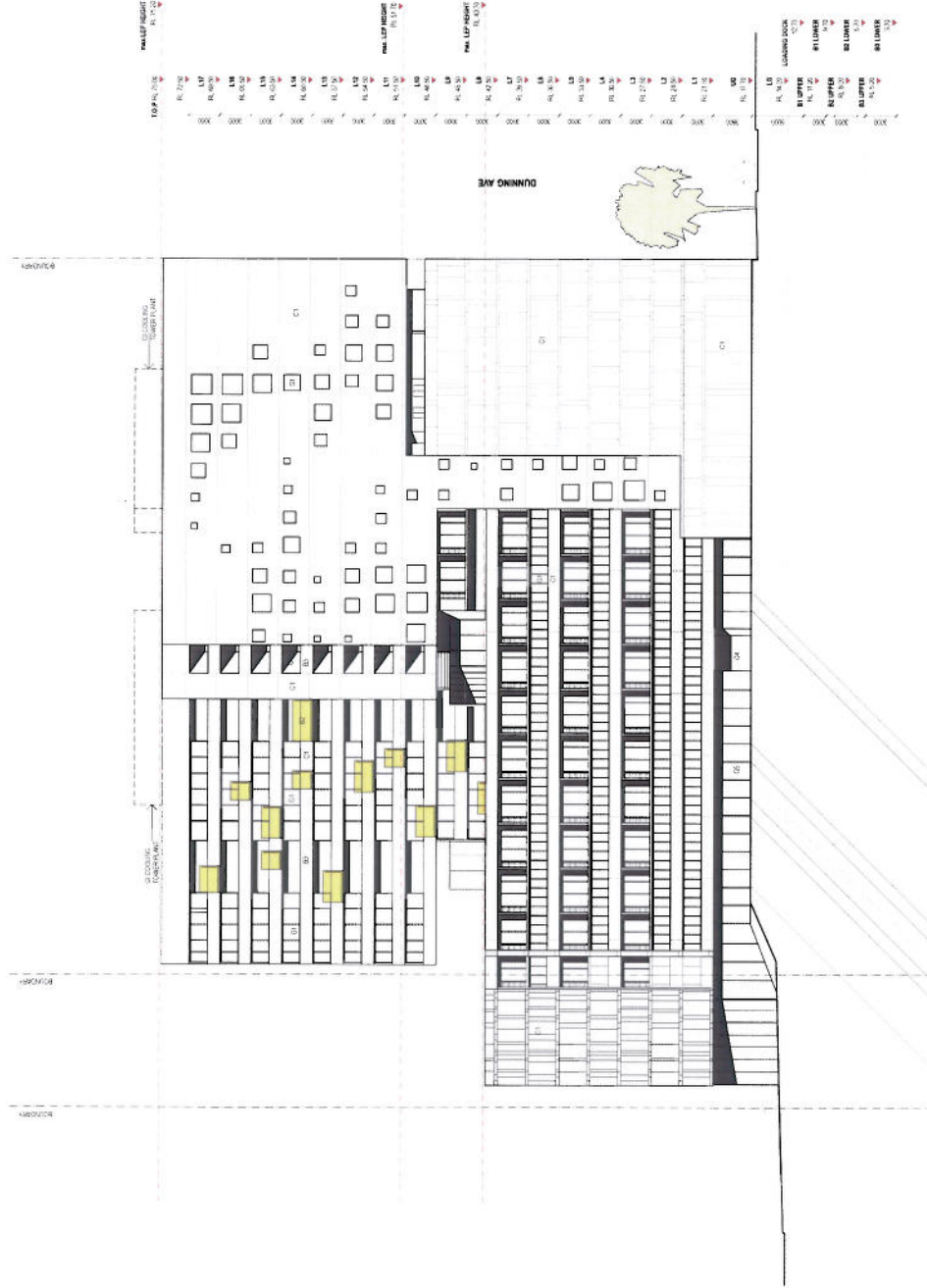
STANISTIC ASSOCIATES  
 LEVEL 3, 156 KESWICK STREET SYDNEY 2000  
 T 9229 7877 F 9229 1072 www.stanistic.com.au

PROJECT ADDRESS  
 301-303 BOTANY ROAD @  
 GREEN SQUARE, SYDNEY NSW

STAGE 1 DEVELOPMENT APPLICATION  
 MIXED USE DEVELOPMENT  
 PROJECT NUMBER: 09 019

SCALE 1:250 @ A1  
 25M  
 DA23  
 DWG ID  
 K  
 17.02.12

# ATTACHMENT A



## EXTERNAL MATERIALS AND FINISHES LEGEND

- Materials**
  - B1 Balustrade, aluminum framed glass panel, powdercoat
  - B2 Balustrade, glass panel
  - B3 Balustrade, precast concrete panel, paint
- Cladding**
  - C1 Cladding, precast concrete panel, paint
  - C2 Cladding, in-situ concrete, paint
- Glazing**
  - G1 Glazing, aluminum framed glass window and doors, powdercoat
  - G2 Glazing, aluminum framed glass louvers, powdercoat
  - G3 Glazing, aluminum framed glass spandrel, powdercoat
  - G4 Glazing, frameless glass doors and panels
  - G5 Glazing, frameless absorption glass panel
  - G6 Glazing, frameless fixed glass panel
- Miscellaneous**
  - M1 Polished steel roller shutter, colorbond
- Screens**
  - S1 Screen, sliding aluminum perforated panel, powdercoat
  - S2 Screen, fixed aluminum bar grill, powdercoat

## STAGE 1 DEVELOPMENT APPLICATION

**MIXED USE DEVELOPMENT**  
PROJECT NUMBER: 09 019

PROJECT ADDRESS  
301-303 BOTANY ROAD @  
GREEN SQUARE, SYDNEY NSW

FOR  
JOHN NEWELL



**STANISIC ASSOCIATES**  
LEVEL 3/1346 KENT STREET SYDNEY, 2000  
1 9399 0811 / 1 9399 9732 www.stanisic.com.au

PANEL AL DELETED

## SOUTH EAST ELEVATION

SCALE 1:250 @ A1  
DA24  
DWG.LID  
K  
17.02.12